

# VISTA PACK

[www.vistapackco.com](http://www.vistapackco.com)

## X-RAY BULK INSPECTION



# Introduction



- Xavis Co Ltd capable of manufacturing food x-ray inspection system and industrial x-ray system.



- Production capacity – 350 units per a year



# CONTENTS

## INDEX

---

- 1. X-ray Bulk Inspection System**
  1. Feature
  2. Benefits
  3. References
- 2. Application**
  1. Raisins
  2. Sunflower Seed
  3. Walnut
  4. Strawberry
  5. Dried blueberry
  6. Dried blueberry powder
  7. Dried Vegetable (carrot, mashroom)
- 3. Model Recommendation**
  1. FSCAN-4280
  2. FSCAN-6500

# Xray Bulk Inspection

## Features



# Xray Bulk Inspection

## Benefits

---

- Digital X-ray Inspection system
- Dedicated Model for products in bulk
- Metals, stones, glass, ceramics, hard plastics are removed
- Open and accessible mechanical design
- Proven state-of-the-art technology
- Simple touch screen operation
- Internet remote diagnostics
- Guaranteed fastest payback in the industry
- Automatic product learning with 10,000 product storage capability.
- Production reports are standard: daily, monthly, and yearly
- Automatic image management. Files can be exported by USB stick or LAN.
- Tool-less conveyor belt removal for cleaning.

# Xray Bulk Inspection

## References



Nuts

Raisin



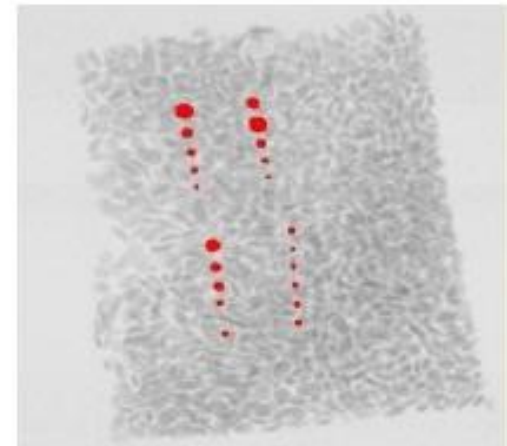
Vegetables

Fruits



# Application

## Raisins



- Height : 10~20 mm
- Tested machine : FSCAN-4280

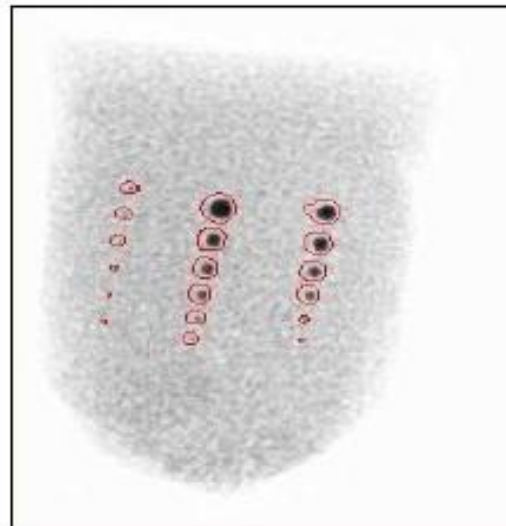
Foreign body	Detectable Size
Stainless 304 (Density 7.96g/cm <sup>3</sup> )	0.8mm
Ceramic (Density 3.85g/cm <sup>3</sup> )	3.0 ~ 4.0mm
Aluminium (Density 2.7g/cm <sup>3</sup> )	3.0 ~ 4.0mm
Glass (Density 2.5g/cm <sup>3</sup> )	3.0 ~ 4.0mm

\* Results may vary depending on production environment



# Application

## Sunflower Seed



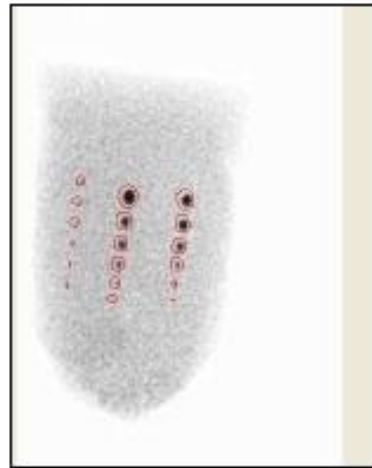
- Height : 10~20 mm
- Tested machine : FSCAN-4280

Foreign body	Detectable Size
Stainless 304 (Density 7.96g/cm <sup>3</sup> )	0.6mm
Ceramic (Density 3.85g/cm <sup>3</sup> )	2.0mm
Glass (Density 2.5g/cm <sup>3</sup> )	2.0mm

\* Results may vary depending on production environment

# Application

## Walnut



← Glass

← Ceramic

← Stainless Steel

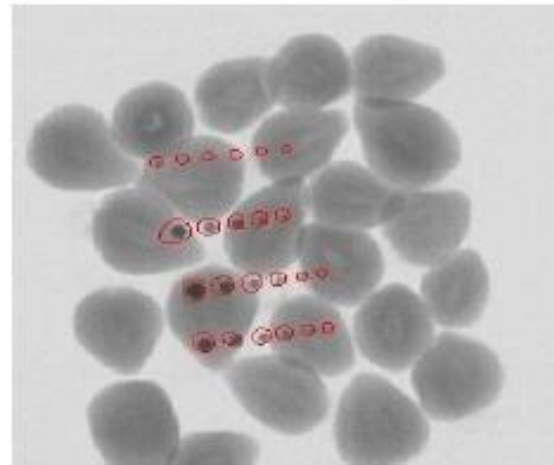
- Height : 10~20 mm
- Tested machine : FSCAN-4280

Foreign body	Detectable Size
Stainless 304 (Density 7.96g/cm <sup>3</sup> )	0.8mm
Ceramic (Density 3.85g/cm <sup>3</sup> )	3.0 ~ 4.0mm
Glass (Density 2.5g/cm <sup>3</sup> )	3.0 ~ 4.0mm

\* Results may vary depending on production environment

# Application

## Strawberry



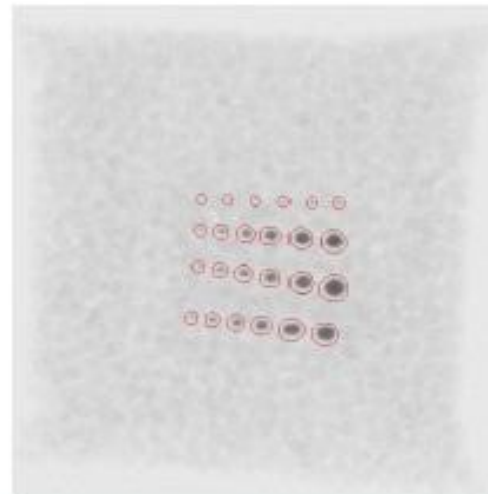
- Height : 10~20 mm
- Tested machine : FSCAN-4280

Foreign body	Detectable Size
Stainless 304 (Density 7.96g/cm <sup>3</sup> )	0.8mm
Ceramic (Density 3.85g/cm <sup>3</sup> )	3.0 ~ 4.0mm
Glass (Density 2.5g/cm <sup>3</sup> )	3.0 ~ 4.0mm
Aluminium (Density 2.7g/cm <sup>3</sup> )	3.0 ~ 4.0mm

\* Results may vary depending on production environment

# Application

## Dried Blueberry



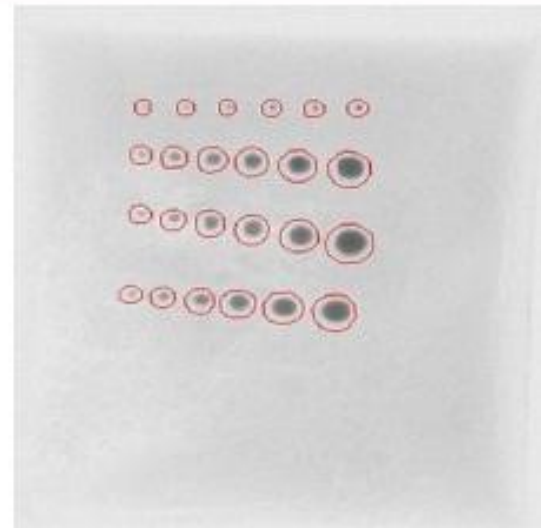
- Height : 10~20 mm
- Tested machine : FSCAN-4280

Foreign body	Detectable Size
Stainless 304 (Density 7.96g/cm <sup>3</sup> )	0.6mm
Ceramic (Density 3.85g/cm <sup>3</sup> )	2.0mm
Glass (Density 2.5g/cm <sup>3</sup> )	2.0mm
Aluminium (Density 2.7g/cm <sup>3</sup> )	2.0mm

\* Results may vary depending on production environment

# Application

## Dried Blueberry Powder



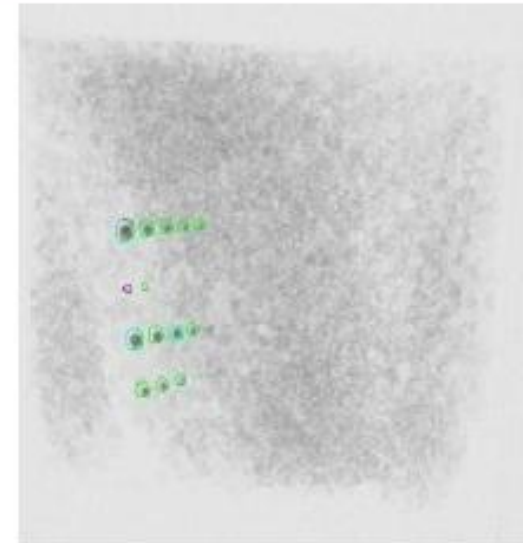
- Height : 10~20 mm
- Tested machine : FSCAN-4280

Foreign body	Detectable Size
Stainless 304 (Density 7.96g/cm <sup>3</sup> )	0.5 ~ 0.6mm
Ceramic (Density 3.85g/cm <sup>3</sup> )	1.0 ~ 2.0mm
Glass (Density 2.5g/cm <sup>3</sup> )	1.0 ~ 2.0mm
Aluminium (Density 2.7g/cm <sup>3</sup> )	1.0 ~ 2.0mm

\* Results may vary depending on production environment

# Application

## Dried Vegetable



- Height : 10~20 mm
- Tested machine : FSCAN-4280

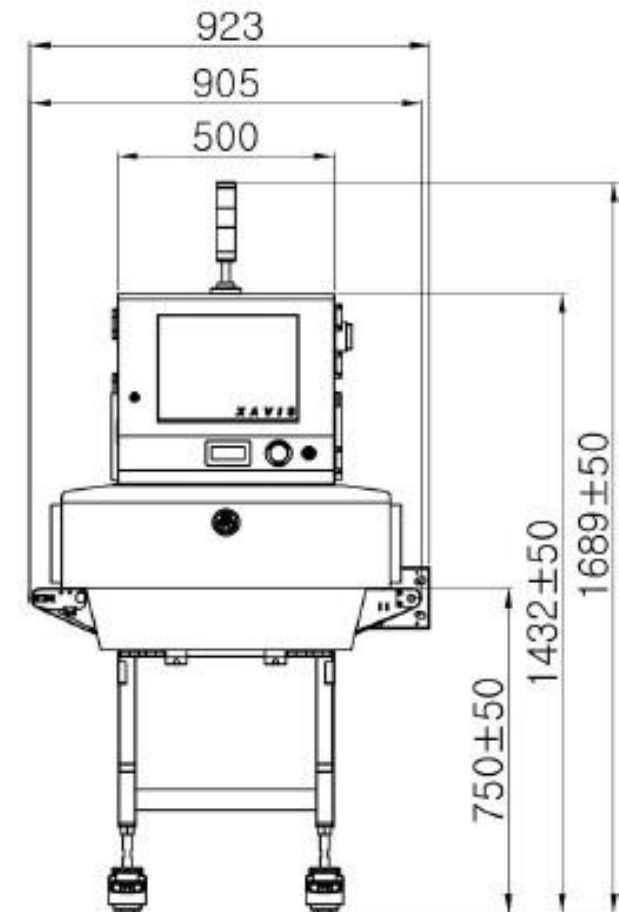
Foreign body	Detectable Size
Stainless 304 (Density 7.96g/cm <sup>3</sup> )	0.7 ~ 0.8 mm
Ceramic (Density 3.85g/cm <sup>3</sup> )	4.0 ~ 5.0 mm
Glass (Density 2.5g/cm <sup>3</sup> )	5.0 ~ 6.0 mm
Aluminium (Density 2.7g/cm <sup>3</sup> )	4.0 ~ 5.0 mm

\* Results may vary depending on production environment

# Model Recommend

## FSCAN-4280

	FSCAN-4280
Min. detection sensitivity	0.3mm
X-ray	Generator : Max.80kv/100w Detector : 0.4mm pixel Leakage : 1 $\mu$ Sv / a hour
Conveyor	Speed : 10~60m / a minute Max. width : 420 mm Max. height : 145 mm Max. load : 10 kg
Capacity	1 ton / a hour
Management	Production analysis by daily, months and yearly MTBF, MTTR, Error Analysis
Electricity	Single phase, 220V, 50/60 Hz
Size/Weight	1470 X 930 X 900 mm (H x W x D) 343 Kg
Option	Ejection system Air Conditioner
Certification	CE /FCC / UL / IP66



# Model Recommend

## FSCAN-4280

